



**Kronen salad and vegetable cutters:  
Model KG-251 and KG-253**

**The ones with the big filling compartment  
and excellent performance**



**Nobody can beat us when it comes to cutting vegetables and salads.**

**Our models KG-251 and KG-253 are the very first vegetable cutters made entirely from stainless steel and come with a detachable stainless steel filling compartment.**

**It features an XXL filling compartment - makes for fast and efficient work:**

- suitable for big pieces**
- features three speed settings**
- the pusher also works as a lever and makes lighter work**



Exact and clean slices mean your salads look really appetising and also have a longer shelf life.

Your salads stay fresh and crisp much longer thanks to our stainless steel blades - precision and durability for all your cutting needs.

One appliance, ideal for restaurants, hotels, snack bars or salad bars.



#### **Model KG-253**

Three speed settings: 250/350/400 r.p.m.  
Slow for vegetables and fruit which bruise easily.  
Fast for crudites. An excellent achiever!



Suitable for both left and right handed users:  
you can operate the Kronen appliance from all sides.  
Its lever action means light work with a minimum of effort.

**New! The Kronen brunoise/vegetable dice cutter**

Included in special attachments.  
 The special brunoise attachment can be  
 fitted later to all table top models.  
 Cuts exact 3x3 or 5x5mm dice.



**Detachable collecting container**

Nobody would just wipe pots and plates.  
 But for vegetable cutters, there used  
 to be no other cleaning solution.

Now you can take off the collecting  
 compartment completely, rinse it under  
 running water or even put it in the  
 dishwasher.  
 A special feature with all Kronen vegetable  
 cutters.



**Everything made entirely from stainless steel**

With our Kronen KG series everything is made from  
 high quality stainless steel - easy to take apart for  
 quick and thorough cleaning.



**Setting an example:**

the detachable collecting compartment made  
 from stainless steel - for exemplary hygiene.  
 Only available with Kronen appliances.



**Kronen blades for exact and clean slicing**

**SLICING**



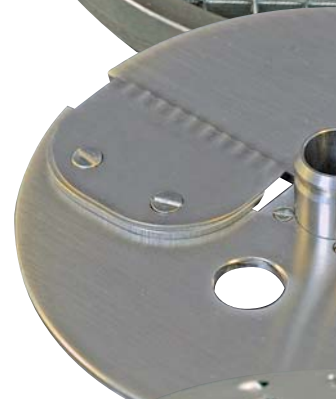
**JULIENNE**



**DICING**



**CRINCLE CUT**



**GRATING**



## Blade discs for the Kronen KG-251/253: stainless steel model, polished, hardened blades



**Adjustable blades 1–6 mm**  
made entirely from stainless steel, open;  
for all your cutting needs

**art.-nr.**  
45443



### For thin slices:

1 fine slicer	1 mm	45437
2 fine slicer	2 mm	45438
3 fine slicer	3 mm	45439



### For thicker slices

4 slicer	4 mm	45440
6 slicer	6 mm	45442



### Julienne discs

Julienne disc	2 x 2 mm	45445
Julienne disc	2,5 x 2,5 mm	45472
Julienne disc	4 x 4 mm	45446
Julienne disc	6 x 6 mm	45447



### Grating discs

1 fine grating (nuts, almonds, bread)		45459
2 grating disc	2 mm	45454
3 grating disc	3 mm	45455
4 grating disc	4 mm	45456
6 grating disc	6 mm	45457
8 grating disc	8 mm	45458



### Dicing grids

dicing grid	7,5 x 7,5 mm	45450
dicing grid	10 x 10 mm	45451
dicing grid	12,5 x 12,5 mm	45486
dicing grid	15 x 15 mm	45452
dicing grid	20 x 20 mm	45453



### Crimping slicer

crimping slicer	4 mm	45444
-----------------	------	-------

### Technical data:

	KG 251	KG 253
r.p.m.	300	250/350/450
wattage	0,45 kw	0,45 kw
weight	26 kg	26 kg
voltage	230V/1/50Hz	230V/1/50Hz
resistance	10 A	10 A



### Measurements:

