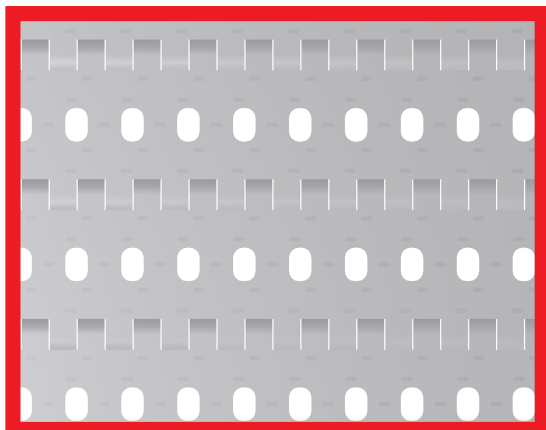


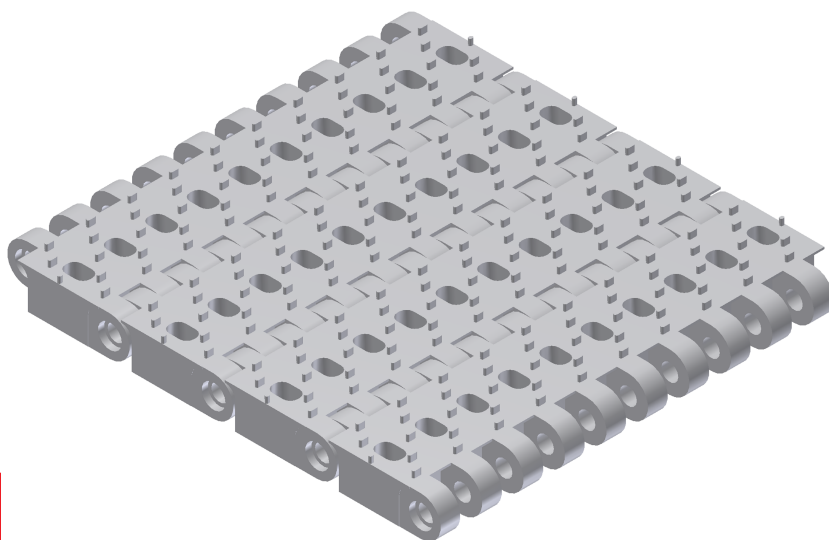
50-930



- Belt surface: Perforated flat top with 3 mm flights.
- Open area: 13 %. Biggest opening 7 x 11 mm.
- Strength: The right belt for very heavy applications.
- Material: PP, POM.
- Colour: Black.
- Accessories: 75 mm flight.
- Application: Very heavy transportation.
Assembling belt for cars.
Truck loading systems.

HUB SPECIFICATION

Hub width 40 mm	Number of teeth		
	12Z	16Z	18Z
Round bore (mm)	60ø	60ø	60ø
	80ø	80ø	80ø
	90ø	90ø	90ø
Square bore (mm)	40x40	40x40	40x40
	60x60	60x60	60x60



BELT DATA

Materials	Max. belt pull kg/m of width	Belt weight kg/m ²
Polypropylene (PP)	6000	14
Polyacetal (POM)		17

SPROCKET DATA

No. of teeth Z	A=Outside diameter (mm)	B=Pitch diameter (mm)	C=Inside diameter (mm)
12	216	191	172
16	279	254	235
18	313	288	269



1:1

