



MUCTPL 200  
MUCTPL 200

## STAINLESS STEEL BEARING INSERT

### TECHNICAL DATA

**No corrosion**

**FDA&FSDA approval**

**From 12 to 50 mm**

**Interchangeable with cast iron standarts units**

**Maintenance free**

**Temperature work from - 35 to 102 degree**

**Tensile strength at break (ASTM 0630) is an impressive 17.300 PSI**

**Excellent mechanical strength' stiffness & dimension stability**

**Stainless Steel greasers and inserts**

**Solid base prevent dirt & bacteria**

**Reluable**



### OPTIONS

**Close covers**

**Open covers (with Stainless Steel spring)**

**Back seals**

**Plastic covers for grease nipple**

**Color**

### BEARINGS INSERT

**Stainless Steel type MUC**

**Stainless Steel type MB**

**Steel UC**

**Steel B**

**Steel Eccentric UG**

**Steel UK**

### MATERIAL

**Housing**

**Exclusive PBT**

**Stainless Steel 304 inserts**

**Stainless Steel 304 greaser**

**Cover**

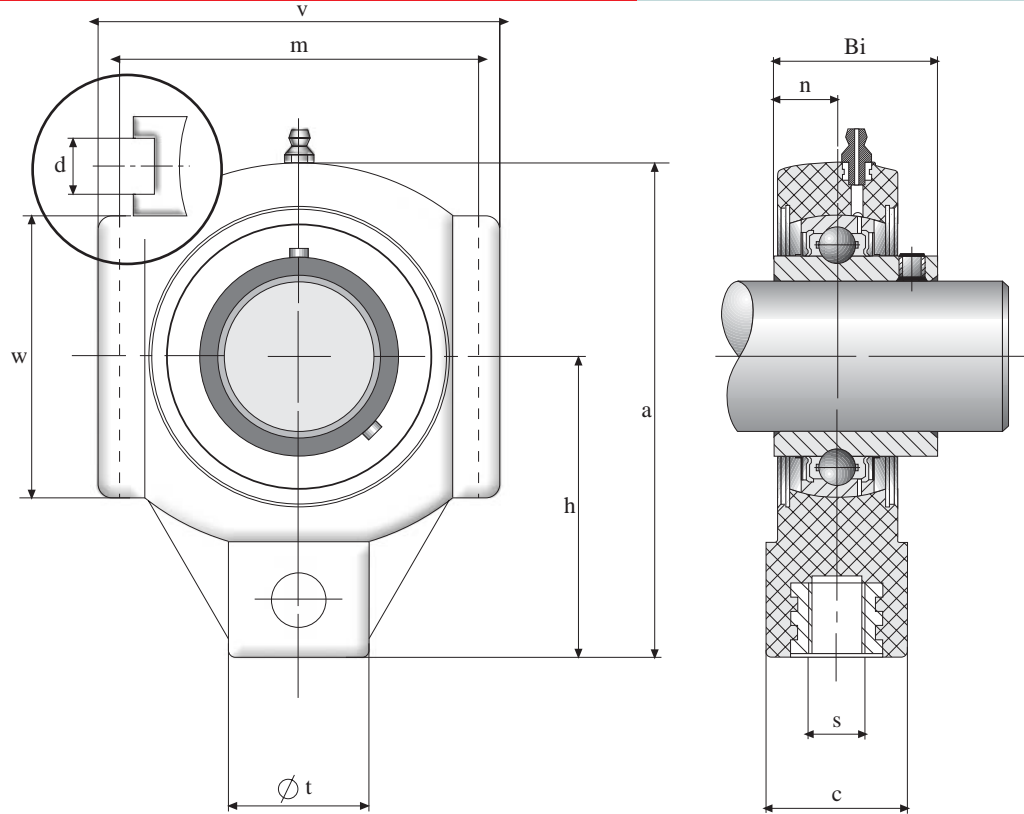
**Polypropylen**

**Stainless Steel ring**

THERMOPLASTIC HOUSED TAKE-UP

# MUCTPL 200

## THERMOPLASTIC UNIT



UNIT NUMBER	SHAFT DIAMETER		DIMENSIONS (mm)											WEIGHT (kg)	HOUSING NUMBER	BEARING NUMBER
	mm	inch	a	c	d	h	m	s	t	v	w	Bi	n			
MUCTPL201	12	1/2	99	27.5	12	64	76	M16	36	89	47	31	12.7	0.38	TPL204	MUC201
MUCTPL202	15	9/16, 5/8	99	27.5	12	64	76	M16	36	89	47	31	12.7	0.37	TPL204	MUC202
MUCTPL203	17	11/16	99	27.5	12	64	76	M16	36	89	47	31	12.7	0.36	TPL204	MUC203
MUCTPL204	20	3/4	99	27.5	12	64	76	M16	36	89	47	31	12.7	0.35	TPL204	MUC204
MUCTPL205	25	13/16, 7/8, 15/16, 1	99	27.5	12	64	76	M16	36	89	47	34	14.3	0.40	TPL205	MUC205
MUCTPL206	30	11/16, 11/8, 13/16, 11/4	125	34.5	12	76	89	M16	40	102.5	63	38.1	15.9	0.55	TPL206	MUC206
MUCTPL207	35	11/4, 15/16, 13/8, 17/16	125	34.5	12	76	89	M16	40	102.5	63	42.9	17.5	0.80	TPL207	MUC207
MUCTPL208	40	11/2, 19/16	140	34.5	16	85	102	M16	40	113	80	49.2	19	0.95	TPL208	MUC208
MUCTPL209	45	15/8, 111/16, 13/4	149	40	16	90	102	M20	50	117	85	49.2	19	1.10	TPL209	MUC209
MUCTPL210	50	113/16, 17/8, 115/16, 2	149	40	16	90	102	M20	50	117	85	51.6	19	1.25	TPL210	MUC210

MODE OF LOAD	BREAKING POINT TEST						
	204	205	206	207	208	209	210
	14800	15500	15800	16500	17300	18210	18860
	3930	4530	5100	6500	7800	8710	9750
	8500	10350	10900	11300	12150	12900	13550
	40770	45300	46100	44100	42800	44230	44880