



MUCNFL 200
MUCNFL 200

STAINLESS STEEL BEARING INSERT



TECHNICAL DATA

No corrosion

FDA&FSDA approval

From 12 to 50 mm

Interchangeable with cast iron standards units

Maintenance free

Temperature work from - 35 to 102 degree

Tensile strength at break (ASTM 0630) is an impressive 17.300 PSI

Excellent mechanical strength' stiffness & dimension stability

Stainless Steel greasers and inserts

Solid base prevent dirt & bacteria

Reluable

OPTIONS

Close covers

Open covers (with Stainless Steel spring)

Back seals

Plastic covers for grease nipple

Color

BEARINGS INSERT

Stainless Steel type MUC

Stainless Steel type MB

Steel UC

Steel B

Steel Eccentric UG

Steel UK

MATERIAL

Housing

Exclusive PBT

Stainless Steel 304 inserts

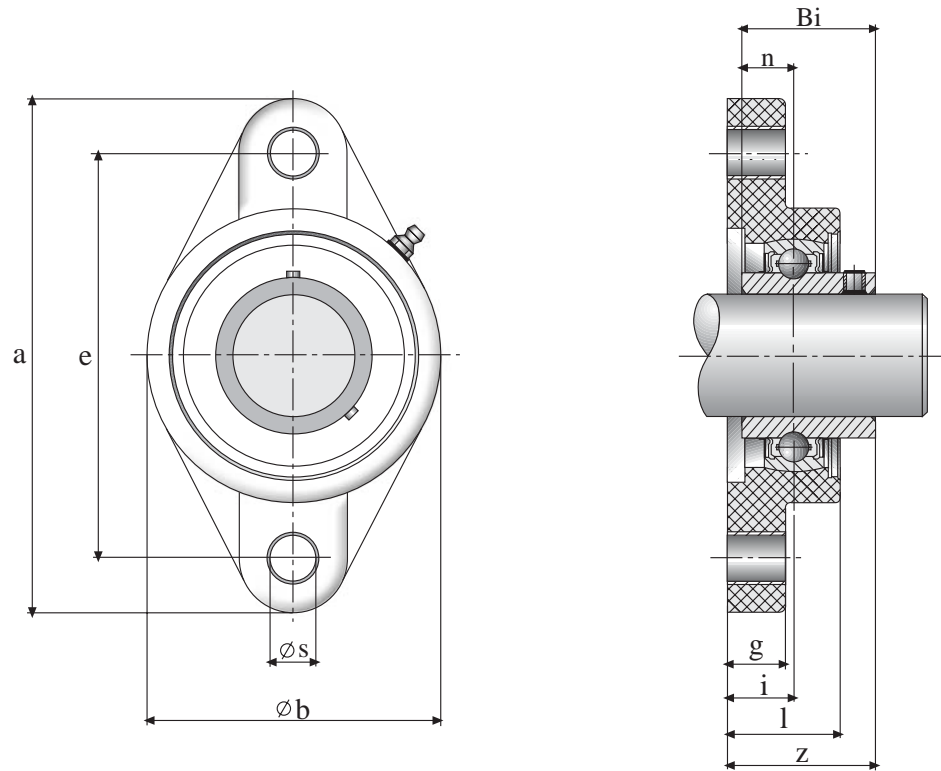
Stainless Steel 304 greaser

Cover

Polypropylen

Stainless Steel ring

THERMOPLASTIC HOUSED 2-BOLT FLANGE



UNIT NUMBER	SHAFT DIAMETER		DIMENSIONS (mm)										WEIGHT (kg)	max. TORQUE		HOUSING NUMBER	BEARING NUMBER
	mm	inch	a	e	b	g	l	s	z	i	Bi	n		bolt d.	Nm		
MUCNFL201	12	1/2	114	90	65	11.4	26.5	11	33.7	15.4	31	12.7	0.27	M10	18	NFL204	MUC201
MUCNFL202	15	9/16, 5/8	114	90	65	11.4	26.5	11	33.7	15.4	31	12.7	0.26	M10	18	NFL204	MUC202
MUCNFL203	17	11/16	114	90	65	11.4	26.5	11	33.7	15.4	31	12.7	0.25	M10	18	NFL204	MUC203
MUCNFL204	20	3/4	114	90	65	11.4	26.5	11	33.7	15.4	31	12.7	0.24	M10	18	NFL204	MUC204
MUCNFL205	25	13/16, 7/8, 15/16, 1	131	99	69.5	13.5	29.1	11	36.7	17	34	14.3	0.30	M10	25	NFL205	MUC205
MUCNFL206	30	11/16, 11/8, 13/16, 11/4	148	117	80	13.3	30.5	11	41.2	19	38.1	15.9	0.45	M10	30	NFL206	MUC206
MUCNFL207	35	11/4, 15/16, 13/8, 17/16	164	130	90	16.1	32.8	13	43.4	18	42.9	17.5	0.66	M12	35	NFL207	MUC207
MUCNFL208	40	11/2, 19/16	176	144	100	20	37.5	14	51.7	21.5	49.2	19	0.87	M12	40	NFL208	MUC208
MUCNFL209	45	15/8, 111/16, 13/4	188.5	148.5	108	21	41	17	54.2	24	49.2	19	1.00	M16	45	NFL209	MUC209
MUCNFL210	50	113/16, 17/8, 115/16, 2	197	157	115	21	43	17	57.6	25	51.6	19	1.20	M16	50	NFL210	MUC210

MODE OF LOAD	BREAKING POINT TEST						
	204	205	206	207	208	209	210
	11750	11375	16450	16900	17350	17600	17950
	11000	13850	13350	13950	14050	14300	14550
	8500	11100	14200	14900	14900	15150	15650