



## OPTIONS

**Close covers**

**Open covers (with Stainless Steel spring)**

**Back seals**

**Plastic covers for grease nipple**

**Color**

## BEARINGS INSERT

**Stainless Steel type MUC**

**Stainless Steel type MB**

**Steel UC**

**Steel B**

**Steel Eccentric UG**

**Steel UK**

MUCFBL 200  
MUCFBL 200

## STAINLESS STEEL BEARING INSERT

### TECHNICAL DATA

**No corrosion**

**FDA&FSDA approval**

**From 12 to 35 mm**

**Interchangeable with cast iron standards units**

**Maintenance free**

**Temperature work from - 35 to 102 degree**

**Tensile strength at break (ASTM 0630) is an impressive 17.300 PSI**

**Excellent mechanical strength' stiffness & dimension stability**

**Stainless Steel greasers and inserts**

**Solid base prevent dirt & bacteria**

**Reluable**

## MATERIAL

### Housing

**Exclusive PBT**

**Stainless Steel 304 inserts**

**Stainless Steel 304 greaser**

### Cover

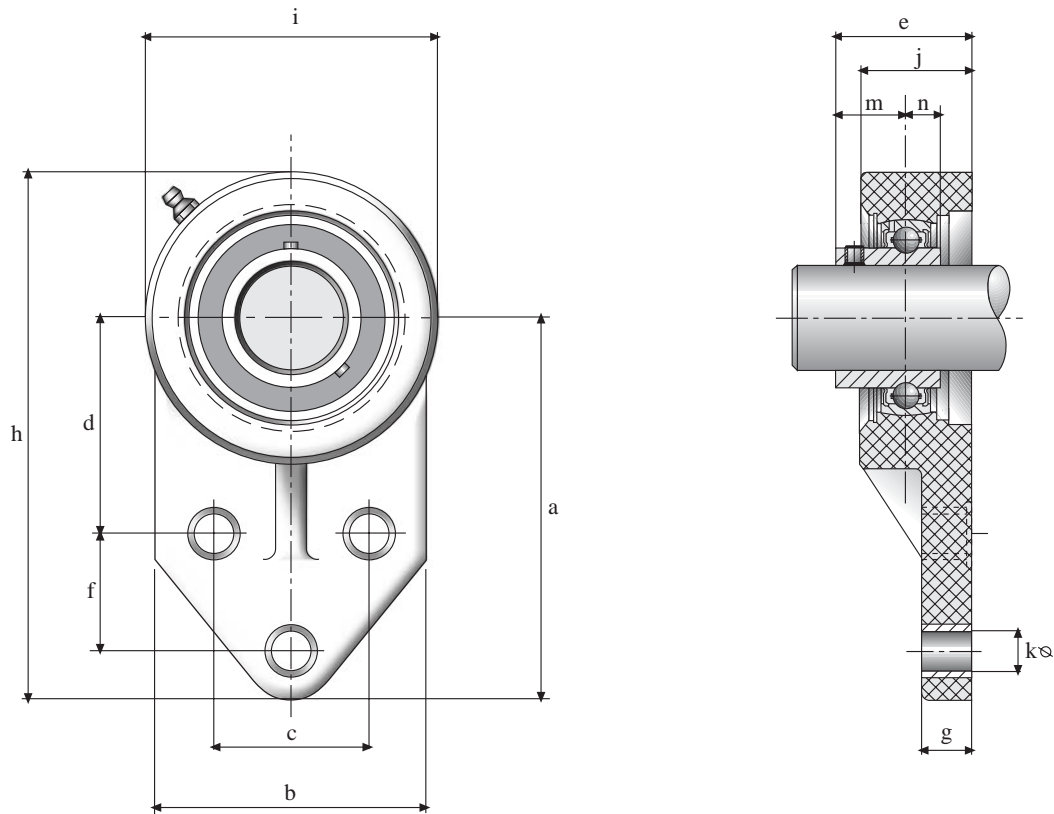
**Polypropylen**

**WStainless Steel ring**

THERMOPLASTIC HOUSED 3-BOLT FLANGE

# MUCFBL 200

## THERMOPLASTIC UNIT



UNIT NUMBER	SHAFT DIAMETER		DIMENSIONS (mm)													WEIGHT (kg)	max. TORQUE		HOUSING NUMBER	BEARING NUMBER
	mm	inch	a	b	c	d	e	f	g	h	i	j	k	m	n		bolt d.	Nm		
MUCFBL201	12	1/2	76.2	62	38.1	42.9	33.7	22.2	11.4	108	63.5	26.5	10.7	18.3	12.7	0.28	M10	18	FBL204	MUC201
MUCFBL202	15	9/16, 5/8	76.2	62	38.1	42.9	33.7	22.2	11.4	108	63.5	26.5	10.7	18.3	12.7	0.26	M10	18	FBL204	MUC202
MUCFBL203	17	11/16	76.2	62	38.1	42.9	33.7	22.2	11.4	108	63.5	26.5	10.7	18.3	12.7	0.25	M10	18	FBL204	MUC203
MUCFBL204	20	3/4	76.2	62	38.1	42.9	33.7	22.2	11.4	108	63.5	26.5	10.7	18.3	12.7	0.25	M10	18	FBL204	MUC204
MUCFBL205	25	13/16, 7/8, 15/16, 1	85.7	63.5	41.3	46	41.2	28.6	11.4	120.6	70	34	10.7	19.7	14.3	0.30	M10	25	FBL205	MUC205
MUCFBL206	30	1 1/16, 1 1/8, 1 3/16, 1 1/4	96.5	76	47.6	52.4	41.5	31.8	13.3	138.5	83	32	10.7	22.2	15.9	0.46	M10	30	FBL206	MUC206
MUCFBL207	35	1 1/4, 1 5/16, 1 3/8, 1 7/16	109.5	89	50.8	60.3	47.1	31.8	16.1	157	95	36.5	13.1	25.4	17.5	0.66	M12	35	FBL207	MUC207

MODE OF LOAD	BREAKING POINT TEST			
	204	205	206	207
	7200	9100	12200	12900
	9200	11100	11800	11900
	2600	2800	2900	3100