



## OPTIONS

**Plastic covers for grease nipple**

**Color**

## BEARINGS INSERT

**Stainless Steel type MB**

**Steel B**

MBLFL 200  
MBLFL 200

## STAINLESS STEEL BEARING INSERT

### TECHNICAL DATA

**No corrosion**

**FDA&FSDA approval**

**From 12 to 35 mm**

**Interchangeable with cast iron standards units**

**Maintenance free**

**Temperature work from - 35 to 102 degree**

**Tensile strength at break (ASTM 0630) is an impressive 17.300 PSI**

**Excellent mechanical strength' stiffness & dimension stability**

**Stainless Steel greasers and inserts**

**Solid base prevent dirt & bacteria**

**Reluable**

**Available with seal and covers**

### MATERIAL

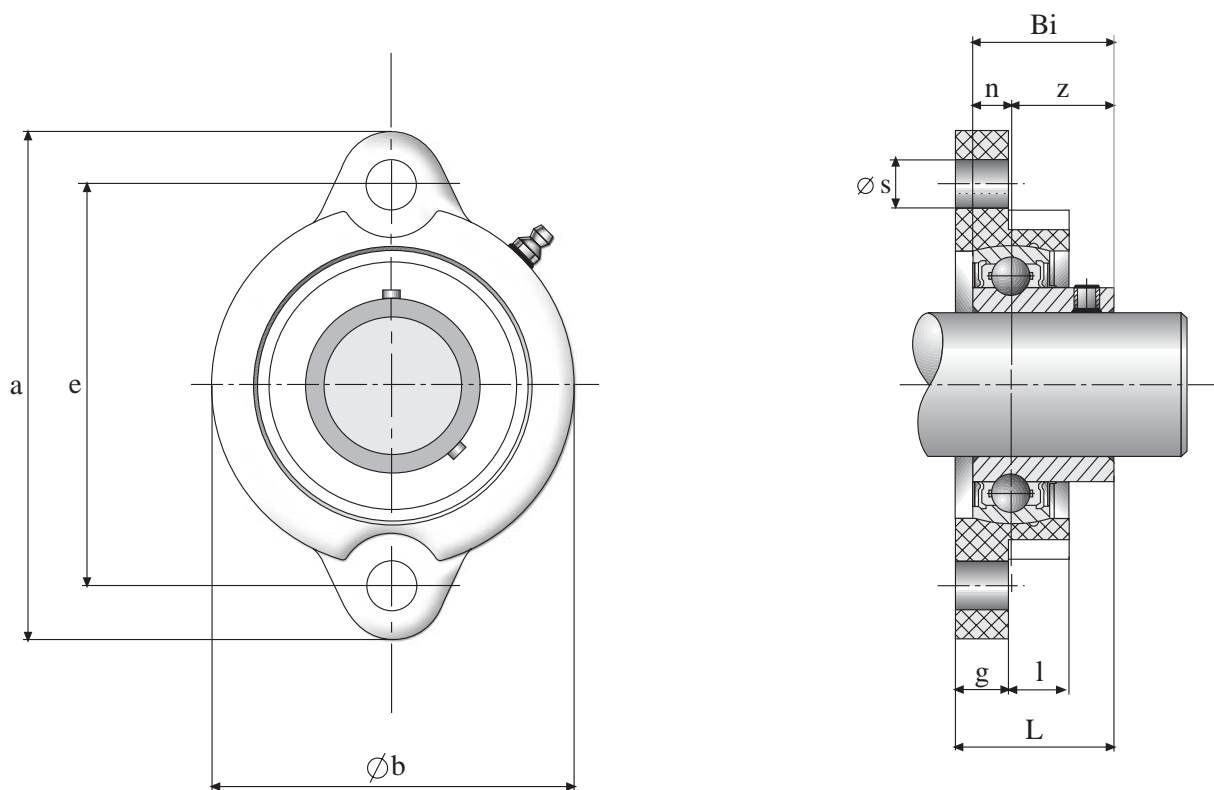
**Housing**

**Exclusive PBT**

**Stainless Steel 304 inserts**

**Stainless Steel 304 greaser**

THERMOPLASTIC HOUSED LIGHT FLANGE



UNIT NUMBER	shaft diam	DIMENSIONS (mm)										bolt size (mm)	WEIGHT (kg)	HOUSING NUMBER	BEARING NUMBER
	mm	a	e	g	l	s	b	z	Bi	L	n				
MBLFL201	12	81	64	10	8	7	56	16	22	28.6	6	M6	0.26	LFL203	MB201
MBLFL202	15	81	64	10	8	7	56	16	22	28.6	6	M6	0.25	LFL203	MB202
MBLFL203	17	81	64	10	8	7	56	16	22	28.6	6	M6	0.24	LFL203	MB203
MBLFL204	20	90	71	11	9	10	63	17.5	24.7	31	7	M8	0.28	LFL204	MB204
MBLFL205	25	95	76	11	10	10	69	19.5	27	31	7.5	M8	0.36	LFL205	MB205
MBLFL206	30	113	90	12	11	11.5	79	22.5	30.3	35.7	8	M10	0.56	LFL206	MB206
MBLFL207	35	122	100	13	11	11.5	89	24.5	32.9	38.9	8.5	M10	0.79	LFL207	MB207

MODE OF LOAD	BREAKING POINT TEST				
	203	204	205	206	207
	8000	8400	8800	11500	11800
	7800	8500	9200	10900	11600
	5200	6300	8600	10300	10500