

STAINLESS STEEL BEARING INSERT



MATERIAL	UNIT MUC200
Ring & Balls	SUS440C
Slinger & Retainer	SUS304
Seal	Nitril rubber (NBR)
Set screw	SUS304
Housing	SCS13

OPERATING TEMPERATURE RANGE

-20~+120c

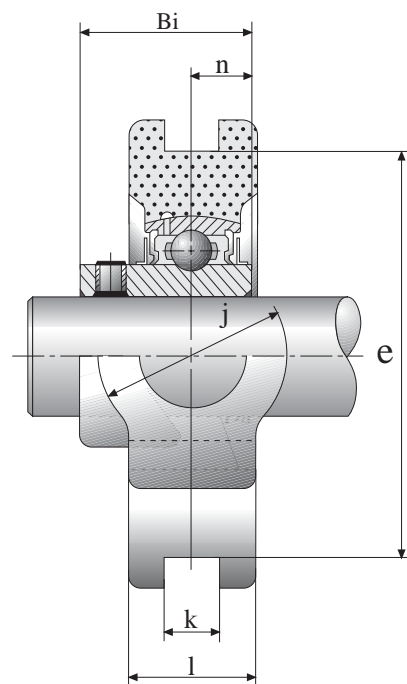
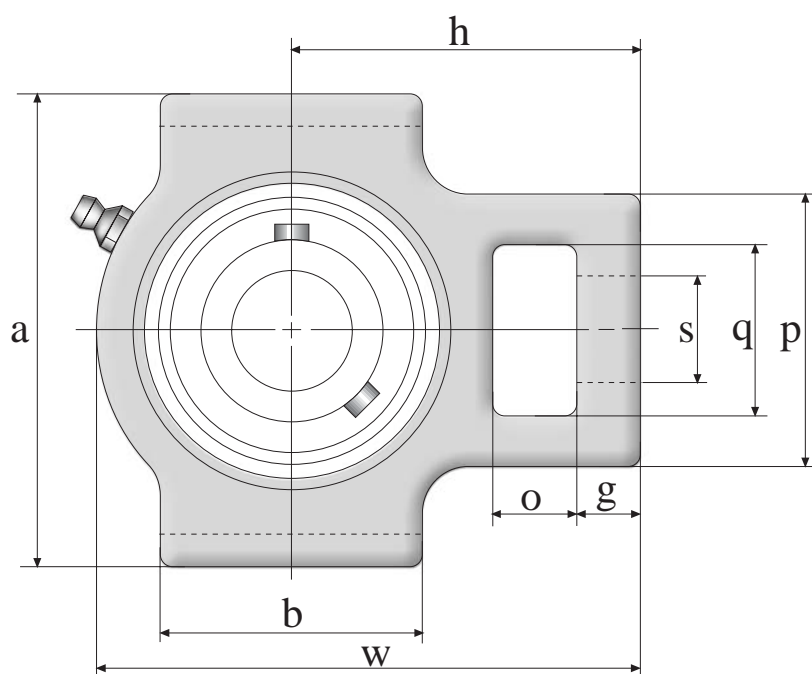
TECHNICAL DATA

Our 100% stainless steel units are manufactured from a select grade of stainless steel which has been carefully chosen to give you what you've asked for: optimal corrosion resistance. Bearing life is excellent because it is not limited to the life of the coating and/or nickel plating.

Scratchers and marks have absolutely no effect on the bearing's ability to resist rust and corrosion.

Excellent for use in food processing, beverage and other high-corrosive applications, these bearings are 100% stainless throughout: housing, balls, inner and outer races, cages, slingers and set screws.

TOLERANCE FOR SS BEARING INNER RINGS								
NOMINAL BORE DIA (MM)		BORE DIAMETER				WIDTH		RADIAL RUN-OUT
		dm Deviations		d Deviations		B Deviations		
over	incl.	high	low	high	low	high	low	max
18	30	+21	0	+25	-4	0	-120	18
30	50	+25	0	+30	-5	0	-120	20



Available in Inch sizes

UNIT NUMBER	SHAFT DIAM.	DIMENSIONS (mm)															WEIGHT (kg)	HOUSING NUMBER	BEARING NUMBER
	mm	o	g	p	q	s	b	k	e	a	w	l	j	h	Da	Bi			
MUCT204	20	16	10	51	32	19	51	12	76	89	94	21	32	61	47	31	0.9	MT204	MUC204
MUCT205	25	16	10	51	32	19	51	12	76	89	97	24	32	62	52	34.1	1	MT205	MUC205
MUCT206	30	16	10	56	37	22	57	12	89	89	113	28	37	70	62	38.1	1.4	MT206	MUC206
MUCT207	35	16	13	64	37	22	64	12	89	102	129	30	37	78	72	42.9	1.8	MT207	MUC207
MUCT208	40	19	16	83	49	29	83	16	102	114	144	33	49	88	80	49.2	2.7	MT208	MUC208
MUCT209	45	19	16	83	49	29	83	16	102	117	144	35	49	87	85	49.2	2.9	MT209	MUC209
MUCT210	50	19	16	83	49	29	86	16	102	117	149	37	49	90	90	51.6	3	MT210	MUC210