

MUCPA 200
MUCPA 200

STAINLESS STEEL BEARING INSERT

MATERIAL	UNIT MUC200
Ring & Balls	SUS440C
Slinger & Retainer	SUS304
Seal	Nitril rubber (NBR)
Set screw	SUS304
Housing	SCS13

OPERATING TEMPERATURE RANGE

-20~+120c

TECHNICAL DATA

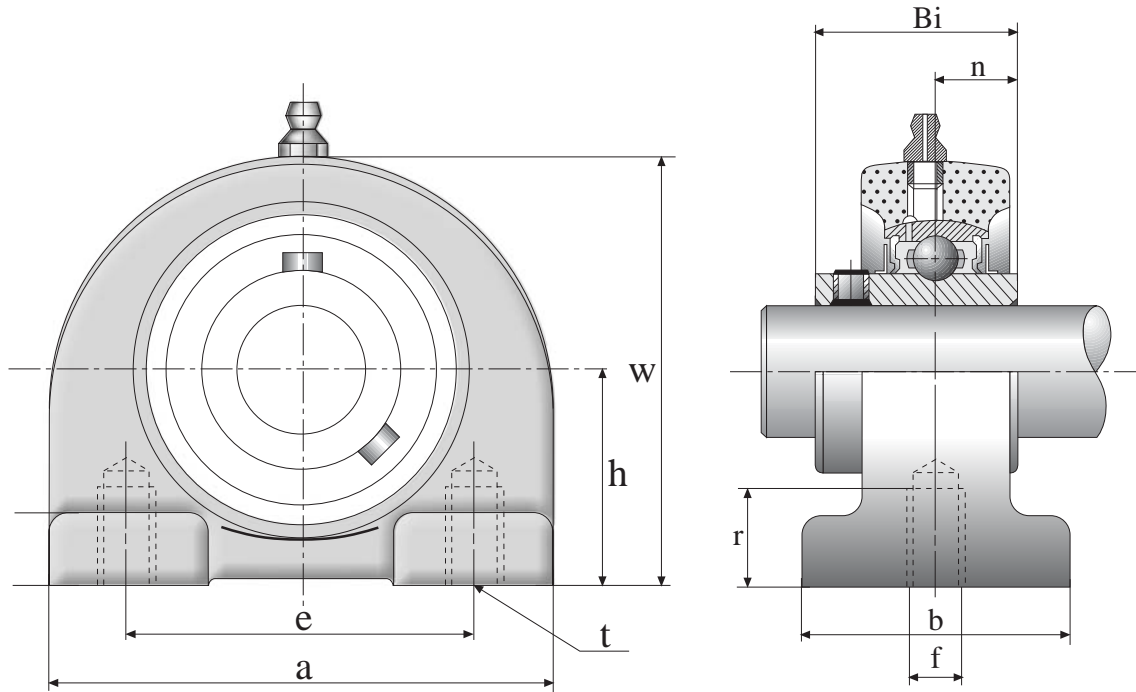
Our 100% stainless steel units are manufactured from a select grade of stainless steel which has been carefully chosen to give you what you've asked for: optimal corrosion resistance. Bearing life is excellent because it is not limited to the life of the coating and/or nickel plating.

Scratchers and marks have absolutely no effect on the bearing's ability to resist rust and corrosion.

Excellent for use in food processing, beverage and other high-corrosive applications, these bearings are 100% stainless throughout: housing, balls, inner and outer races, cages, slingers and set screws.

TOLERANCE FOR SS BEARING INNER RINGS								
NOMINAL BORE DIA (MM)		BORE DIAMETER				WIDTH		RADIAL RUN-OUT
		dm Deviations		d Deviations		B Deviations		
over	incl.	high	low	high	low	high	low	max
18	30	+21	0	+25	-4	0	-120	18
30	50	+25	0	+30	-5	0	-120	20

STAINLESS STEEL UNITS



Available in Inch sizes

UNIT NUMBER	SHAFT DIAM.	DIMENSIONS (mm)									WEIGHT (kg)	BOLT SIZE	HOUSING NUMBER	BEARING NUMBER
	mm	Da	h	a	e	b	w	f	r	Bi		mm		
MUCPA 204	20	47	33.3	73	50.8	38	65	3/8"-16	13	31	0.68	M10	MPA 204	MUC 204
MUCPA 205	25	52	36.5	76	50.8	38	71	3/8"-16	13	34.1	0.85	M10	MPA 205	MUC 205
MUCPA 206	30	62	42.9	102	76.2	38	86	7/16"-14	16	38.1	1.1	M14	MPA 206	MUC 206
MUCPA 207	35	72	47.6	108	82.6	48	95	1/2"-13	19	42.9	1.4	M14	MPA 207	MUC 207
MUCPA 208	40	80	49.2	117	88.9	48	100	1/2"-13	19	49.2	1.8	M14	MPA 208	MUC 208
MUCPA 209	35	85	54.0	127	95.3	51	108	1/2"-13	19	49.2	2.5	M14	MPA 209	MUC 209
MUCPA 210	40	90	57.2	140	101.6	51	117	5/8"-11	22	51.6	3.1	M16	MPA 210	MUC 210