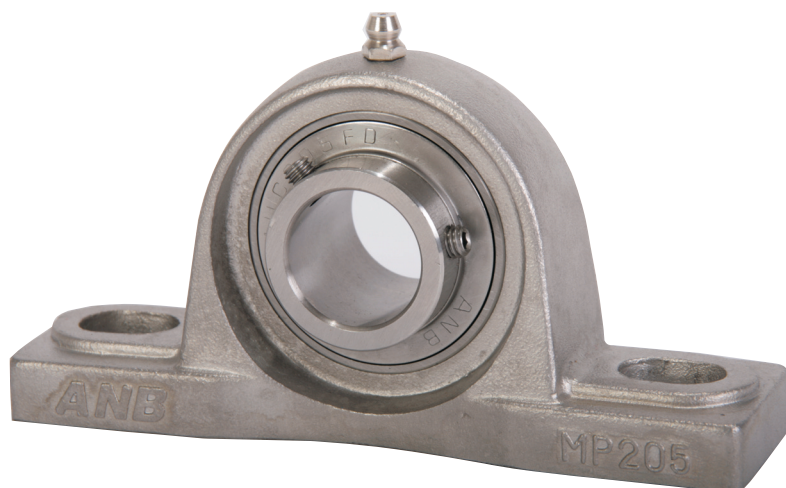


STAINLESS STEEL BEARING INSERT



MATERIAL	UNIT MUC200
Ring & Balls	SUS440C
Slinger & Retainer	SUS304
Seal	Nitril rubber (NBR)
Set screw	SUS304
Housing	SCS13

OPERATING TEMPERATURE RANGE

-20~+120c

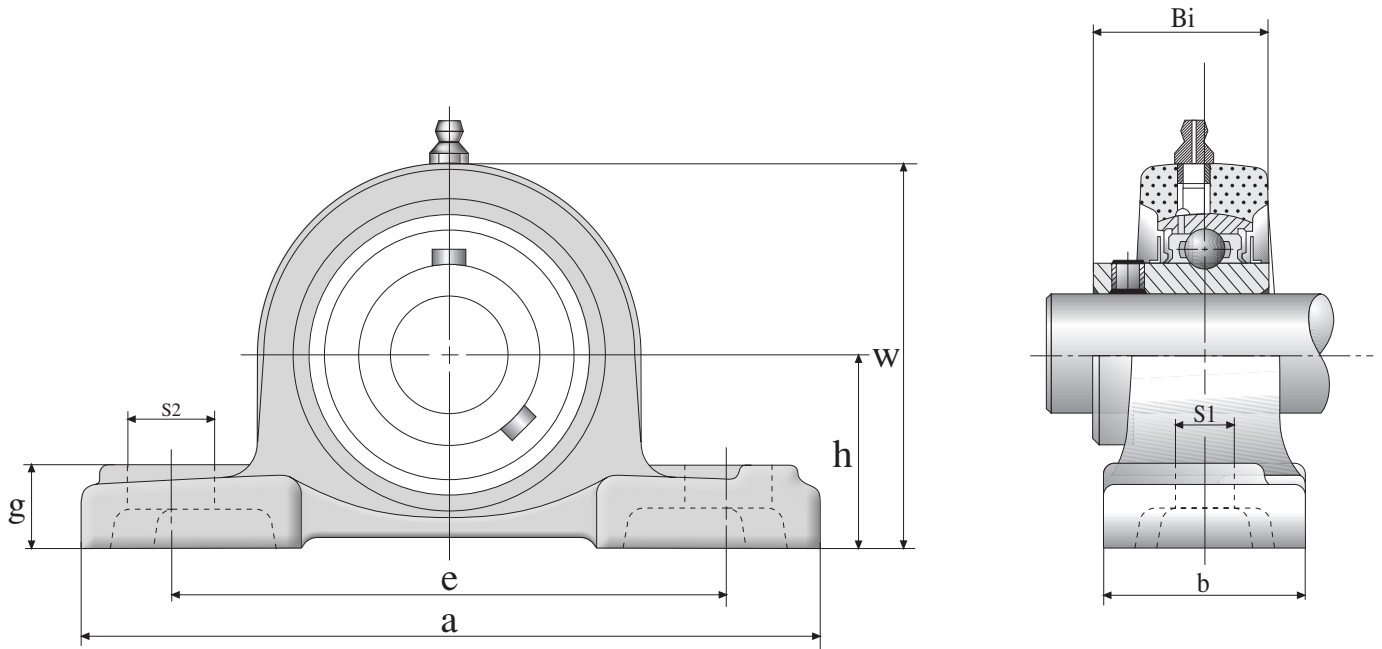
TECHNICAL DATA

Our 100% stainless steel units are manufactured from a select grade of stainless steel which has been carefully chosen to give you what you've asked for: optimal corrosion resistance. Bearing life is excellent because it is not limited to the life of the coating and/or nickel plating.

Scratchers and marks have absolutely no effect on the bearing's ability to resist rust and corrosion.

Excellent for use in food processing, beverage and other high-corrosive applications, these bearings are 100% stainless throughout: housing, balls, inner and outer races, cages, slingers and set screws.

TOLERANCE FOR SS BEARING INNER RINGS								
NOMINAL BORE DIA (MM)		BORE DIAMETER				WIDTH		RADIAL RUN-OUT
		dm Deviations		d Deviations		B Deviations		
over	incl.	high	low	high	low	high	low	max
18	30	+21	0	+25	-4	0	-120	18
30	50	+25	0	+30	-5	0	-120	20



Available in Inch sizes

UNIT NUMBER	SHAFT DIAM.	DIMENSIONS (mm)										WEIGHT (kg)	BOLT SIZE	HOUSING NUMBER	BEARING NUMBER
	mm	Da	h	a	e	b	S1	S2	g	w	Bi		mm		
MUCP 204	20	47	33.3	126	95	38	11	17.5	15.1	65.1	31	0.9	M10	MP 204	MUC 204
MUCP 205	25	52	36.5	140	105	38	12.5	17.5	16	70	34.1	0.95	M10	MP 205	MUC 205
MUCP 206	30	62	42.9	165	121	48	14.3	21	18	83	38.1	1.6	M14	MP 206	MUC 206
MUCP 207	35	72	47.6	167	127	48	14.3	22	19	94	42.9	1.9	M14	MP 207	MUC 207
MUCP 208	40	80	49.2	184	136.5	54	14.3	22	19	100	49.2	2.4	M14	MP 208	MUC 208
MUCP 209	35	85	54.0	190	146	54	15	22	20	109	49.2	2.7	M14	MP 209	MUC 209
MUCP 210	40	90	57.2	206	159	60	18	24	22	114	51.6	3.1	M16	MP 210	MUC 210