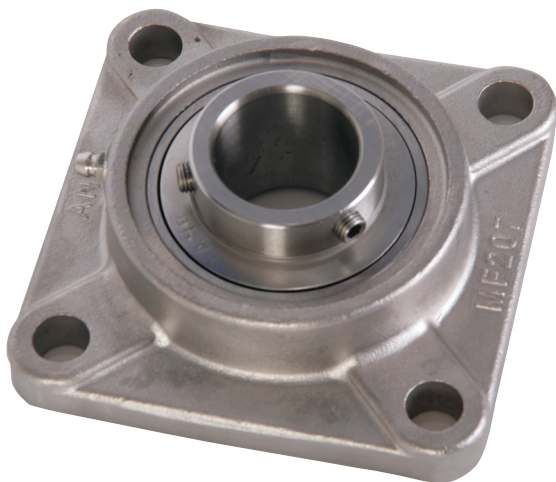


## STAINLESS STEEL BEARING INSERT



MATERIAL	UNIT MUC200
Ring & Balls	SUS440C
Slinger & Retainer	SUS304
Seal	Nitril rubber (NBR)
Set screw	SUS304
Housing	SCS13

## OPERATING TEMPERATURE RANGE

**-20~+120c**

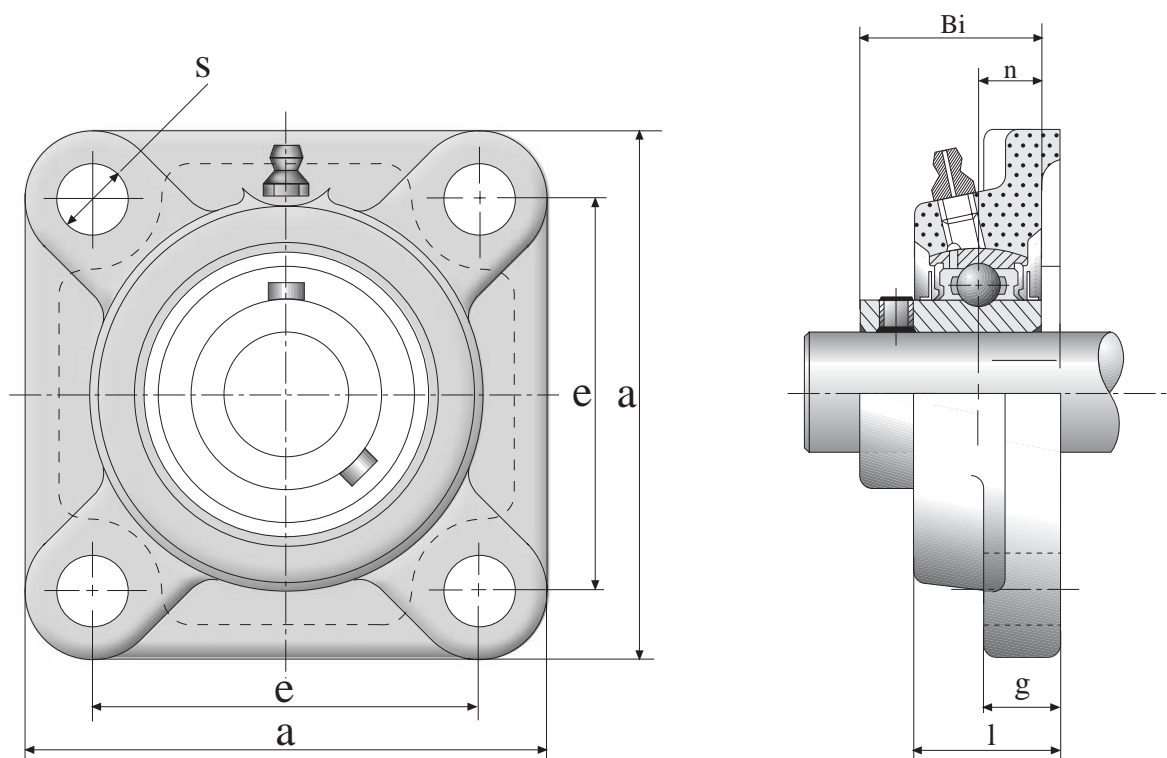
## TECHNICAL DATA

Our 100% stainless steel units are manufactured from a select grade of stainless steel which has been carefully chosen to give you what you've asked for: optimal corrosion resistance. Bearing life is excellent because it is not limited to the life of the coating and/or nickel plating.

Scratchers and marks have absolutely no effect on the bearing's ability to resist rust and corrosion.

Excellent for use in food processing, beverage and other high-corrosive applications, these bearings are 100% stainless throughout: housing, balls, inner and outer races, cages, slingers and set screws.

TOLERANCE FOR SS BEARING INNER RINGS								
NOMINAL BORE DIA (MM)		BORE DIAMETER				WIDTH		RADIAL RUN-OUT
		dm Deviations		d Deviations		B Deviations		
over	incl.	high	low	high	low	high	low	max
18	30	+21	0	+25	-4	0	-120	18
30	50	+25	0	+30	-5	0	-120	20



Available in Inch sizes

UNIT NUMBER	SHAFT DIAM.	DIMENSIONS (mm)								WEIGHT (kg)	BOLT SIZE	HOUSING NUMBER	BEARING NUMBER
	mm	Da	a	e	i	l	g	s	Bi		mm		
MUCF 204	20	47	86	63.5	15.1	25.4	12	11	33.4	0.63	M10	MF 204	MUC 204
MUCF 205	25	52	95	70	15.9	27	14	11.5	35.7	0.85	M10	MF 205	MUC 205
MUCF 206	30	62	108	82.5	17.9	30	14	13.1	40.1	1.17	M14	MF 206	MUC 206
MUCF 207	35	72	117.5	92	19.1	33	14.3	13.1	44.5	1.51	M14	MF 207	MUC 207
MUCF 208	40	80	130	101.6	21	36	14.3	14	51.2	2	M14	MF 208	MUC 208
MUCF 209	45	85	137	104.8	21.8	38	14.3	16	52	2.2	M16	MF 209	MUC 209
MUCF 210	50	90	143	111	21.8	39	15.1	16	54.4	2.4	M16	MF 210	MUC 210