

**Eccentric Lock
Screw Lock**

SIMPLE AND ACCURATE POSITIONING

Centerline marks provided on the housing offer simple and exact positioning, eliminating the need for adjustment after mounting.

For positioning, just scribe the lines on the supporting frame and match them with the centerline marks.

COMPACT AND LIGHTWEIGHT UNITS

This feature permits high performance, and allows for space and energy saving in your machine or equipment design.

QUICK AND EASY TO MOUNT

Eccentric locking collar or ensure fast and positive locking of the bearing to the shaft.

HIGH SEALING EFFICIENCY

Bearings are sealed, which protects against dust or humid conditions. Units can be easily fitted with stainless steel end-covers for additional protection.

HIGH-SPEED OPERATION

Compact bearing design is key to high-speed operation.

HIGH ANTI-CORROSIVENESS (STAINLESS SILVER SERIES)

Ideally suited for applications that come under adverse or extreme environmental conditions.

MARKETS SERVED

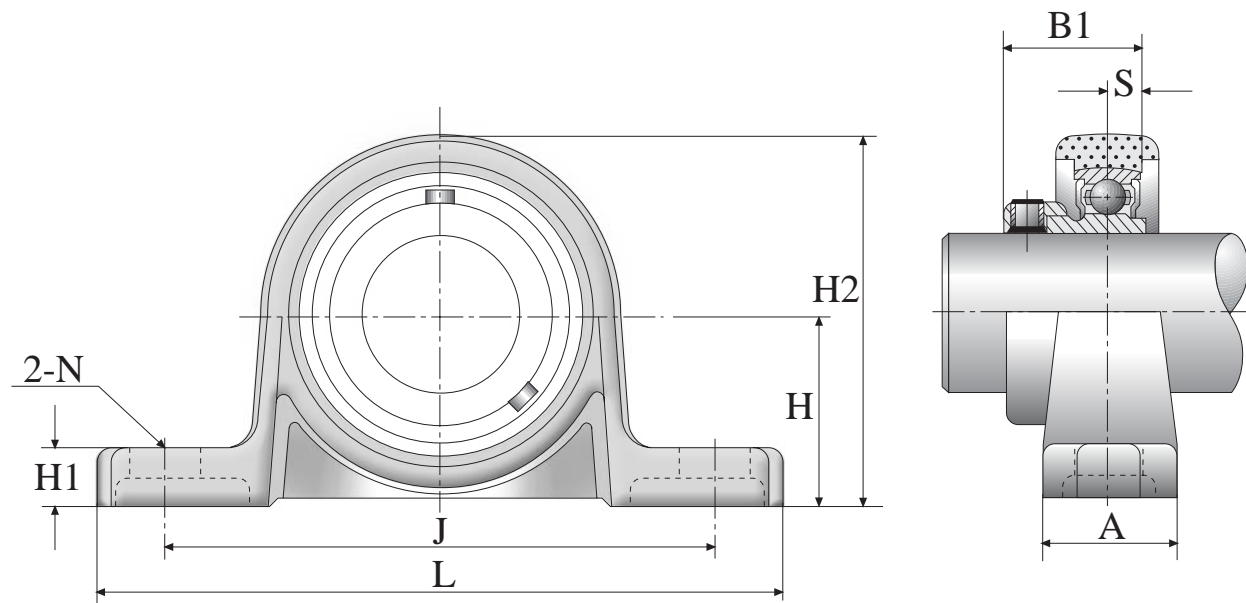
COMMERCIAL: Newspaper & Printing, Textile, Control Systems, Packing & Canning.

MANUFACTURING: Automotive & Motorcycle, Baking Equipment, Children's Toys, Circuits & Electronics, Cosmetics, Glass Product, Plastics, Stereo Equipment, Weather Stripping.

FOOD PROCESSING: Meat & Poultry, Cheese, Eggs, Mayonnaise, Ice Cream, Flour, Vegetables.

SILVER

SILVER



UNIT NUMBER	SHAFT DIAM.	DIMENSIONS (mm)										BOLT SIZE
	mm	H	L	J	A	N	H ₁	H ₂	B ₁	S	mm	
UP08	8	15	55	42	13	4.8	5	29	15	3.5		M4
UP000	10	18	67	53	16	7	6	35	17.5	4		M6
UP001	12	19	71	56	16	7	6	38	17.5	4		M6
UP002	15	22	80	63	16	7	7	43	18.5	4.5		M6
UP003	17	24	85	67	18	7	7	47	20.5	5		M6
UP004	20	28	100	80	20	10	9	55	24.5	6		M8
UP005	25	32	112	90	20	10	10	62	25.5	6		M8
UP006	30	36	132	106	26	13	11	70	26.5	6.5		M10